



Cable ID: 1A/8A-D.24

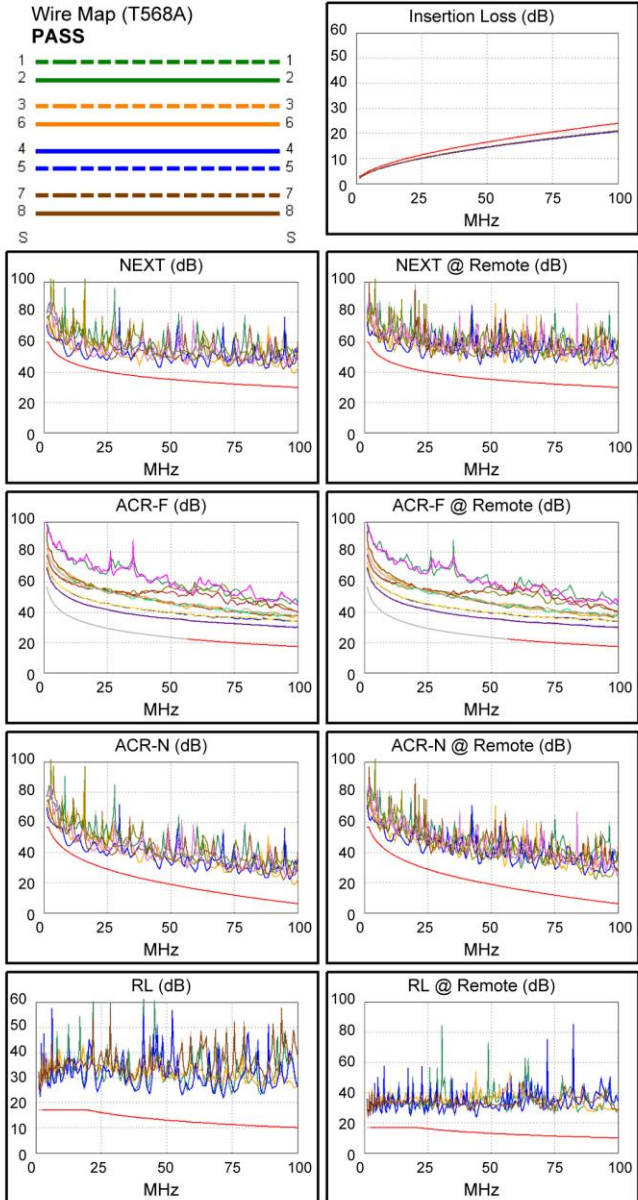
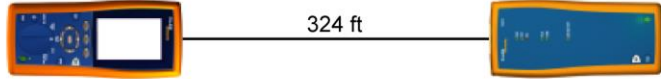
Date / Time: 10/27/2016 06:45:36 PM
Headroom 3.1 dB (NEXT 12-78)
Test Limit: TIA Cat 5e Channel
 Cable Type: Cat 5e UTP
 Calibration Date: 04/18/2014

Software Version: 2.7400
 Limits Version: 1.9300
 NVP: 69.0%

Test Summary: PASS

Model: DTX-1800
 Main S/N: 2227025
 Remote S/N: 2227026
 Main Adapter: DTX-CHA002
 Remote Adapter: DTX-CHA002

Length (ft), Limit 328	[Pair 45]	324
Prop. Delay (ns), Limit 555	[Pair 36]	489
Delay Skew (ns), Limit 50	[Pair 36]	12
Resistance (ohms)	[Pair 78]	19.9
Insertion Loss Margin (dB)	[Pair 36]	2.9
Frequency (MHz)	[Pair 36]	100.0
Limit (dB)	[Pair 36]	24.0



Worst Case Margin Worst Case Value

PASS	MAIN	SR	MAIN	SR
Worst Pair	12-78	12-78	12-36	36-78
NEXT (dB)	3.1	6.0	9.3	11.5
Freq. (MHz)	9.1	1.8	98.3	91.0
Limit (dB)	47.7	59.4	30.2	30.8
Worst Pair	12	12	36	78
PS NEXT (dB)	5.4	7.4	11.1	13.4
Freq. (MHz)	9.4	1.8	98.3	90.8
Limit (dB)	44.5	56.4	27.2	27.8

PASS	MAIN	SR	MAIN	SR
Worst Pair	36-78	36-78	36-78	36-78
ACR-F (dB)	12.0	12.0	12.7	12.5
Freq. (MHz)	14.5	12.5	99.8	98.3
Limit (dB)	34.2	35.5	17.4	17.6
Worst Pair	78	78	78	78
PS ACR-F (dB)	13.3	13.3	13.8	13.7
Freq. (MHz)	14.5	14.5	99.8	98.5
Limit (dB)	31.2	31.2	14.4	14.5

N/A	MAIN	SR	MAIN	SR
Worst Pair	12-78	12-78	12-36	36-78
ACR-N (dB)	3.9	6.3	12.2	14.3
Freq. (MHz)	9.1	2.0	98.3	91.0
Limit (dB)	40.9	55.3	6.4	8.0
Worst Pair	12	12	36	78
PS ACR-N (dB)	6.3	7.9	14.0	16.2
Freq. (MHz)	9.4	1.8	98.3	90.8
Limit (dB)	37.6	53.4	3.4	5.0

PASS	MAIN	SR	MAIN	SR
Worst Pair	45	45	45	45
RL (dB)	8.1	8.0	10.5	10.3
Freq. (MHz)	23.5	18.1	71.5	44.0
Limit (dB)	16.3	17.0	11.5	13.6

Compliant Network Standards:
 10BASE-T 100BASE-TX 100BASE-T4
 1000BASE-T ATM-25 ATM-51
 ATM-155 100VG-AnyLan TR-4
 TR-16 Active TR-16 Passive